

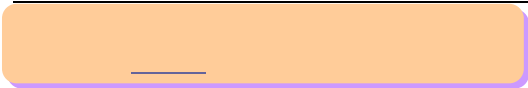


## 有铅

Sn63/Pb37 Sn60/Pb40, Sn55Pb45, SnPbBi

- 1 0.2mm
- 2 12
- 3
- 4
- 5
- 6 --- PCB
- 7 ICT
- 8 Paste in hole

		ROL1	J-STD-004
卤素	0.15wt%		
(SIR)		1 10 <sup>13</sup>	25mil
		1 10 <sup>12</sup>	40 90%RH 96Hrs
		1 10 <sup>5</sup>	
			IPC-TM-650
			IPC-TM-650
			In house
		85~91wt% ± 0.5	
		9~15wt% ± 0.5	
		220 ±30 Pa.s Malcolm (10rpm,2 )	T5,89% metal for printing
		160 Pa.s±10% Malcolm (10rpm,2 )	T4,87% metal for syringe
		0.55 ± 0.05	In house
		90%	Copper plate(Sn63,90%metal)
			J-STD-005
			In house
Vs	48gF	0	IPC-TM-650 ± 5%
	56gF	2	
	68gF	4	
	44gF	8	
		12	In house
			0~10



1

T3 mesh -325/+500 25~45 m

Fine pitch

2

1) “ ”

0~10

200

4

2)

3

1 ;

3



有铅免洗

0.4mm

0.12mm



有铅免洗

80%

	60 ~ 90HS
	45 <sup>0</sup> ~ 60 <sup>0</sup>
	2 ~ 4 10 <sup>5</sup> pa
	20 ~ 40mm/sec 15 ~ 20mm/sec 50 ~ 100mm/sec
	25 ± 3 40 ~ 70%



\*

\*



\*

PCB

PCB

A5

200g

B5

300g

A4

400g

4

4

5

6

此有铅



500g

PE

20

35



0 ~10

•

•

0

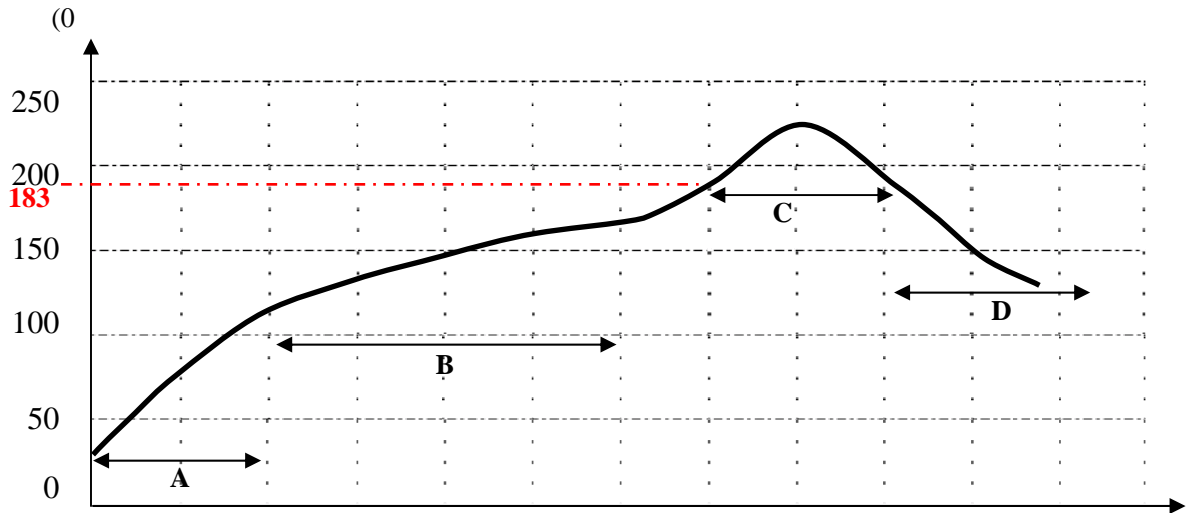
6



MSDS

# 有铅

Sn63/Pb37 Sn60/Pb40, Sn55Pb45, SnPbBi



A. \_\_\_\_\_ 25~33%

\* 1.0~3.0 /  
\*

B. \_\_\_\_\_ 33~50%

PCB  
\* 130~170 60~120 2 /

C. \_\_\_\_\_

\* 210~240 183 40~90 Important 200 20~50  
\*  
\*

D. \_\_\_\_\_

\* 4 75  
\*  
\*

